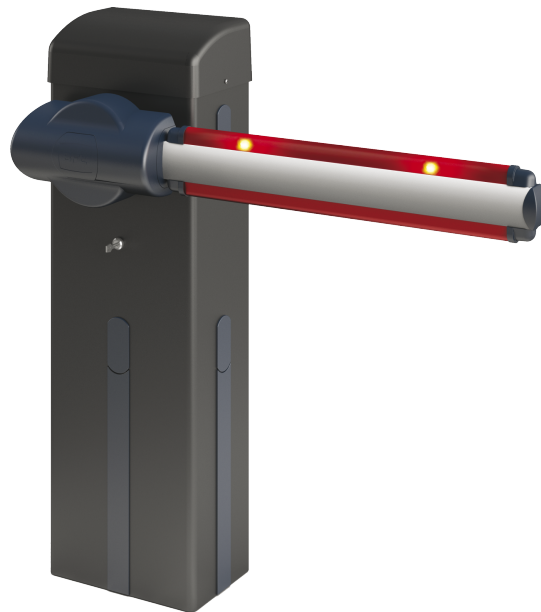


Product

Range of barriers for intensive and very intensive use, able to manage useful passages up to 6m. Available in 24V versions, they have a wide range of accessories making them ideal in any context.

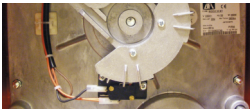
Code		
P940058 00002	GIOTTO 30 BT	Barrier with 24 V motor power supply for clear opening up to 3 m and opening time 4 sec . Impact resistance by means of encoder . Grey RAL 7015
P940058 00102	GIOTTO 30 BT RAL	Barrier with 24 V power supply for clear opening up to 3 m and opening time 4 sec . Impact resistance by means of encoder . RAL colour as requested
P940059 00002	GIOTTO 30S BT	Barrier with 24 V motor power supply for clear opening up to 3 m and opening time 2.5 sec . Impact resistance by means of encoder . Grey RAL 7015
P940059 00102	GIOTTO 30S BT RAL	Barrier with 24 V power supply for clear opening up to 3 m and opening time 2.5 sec . Impact resistance by means of encoder . RAL colour as requested
P940059 00001	GIOTTO 30S BT 120	Barrier with 24 V power supply for clear opening up to 3 m and opening time 2.5 sec. Impact resistance by means of encoder .
P940059 00101	GIOTTO 30S BT 120 RAL	Barrier with 24 V power supply for clear opening up to 3 m and opening time 2.5 sec. Impact resistance by means of encoder .
P940060 00002	GIOTTO 60 BT	Barrier with 24 V motor power supply for clear opening up to 6 m and opening time 5 sec . Impact resistance by means of encoder . Grey RAL 7015
P940060 00102	GIOTTO 60 BT RAL	Barrier with 24 V power supply for clear opening up to 6 m and opening time 5 sec . Impact resistance by means of encoder . RAL colour as requested
P940061 00002	GIOTTO 60S BT	Barrier with 24 V motor power supply for clear opening up to 6 m and opening time 4 sec . Impact resistance by means of encoder . Grey RAL 7015
P940061 00102	GIOTTO 60S BT RAL	Barrier with 24 V power supply for clear opening up to 6 m and opening time 4 sec . Impact resistance by means of encoder . RAL colour as requested
P940061 00001	GIOTTO 60S BT 120	Barrier with 24 V power supply for clear opening up to 6 m and opening time 4 sec. Impact resistance by means of encoder .
P940061 00101	GIOTTO 60S BT 120 RAL	Barrier with 24 V power supply for clear opening up to 6 m and opening time 4 sec. Impact resistance by means of encoder .



PLUS



Control unit located in an easily accessible position and separate from the mechanical part



Limit switch system with electronic adjustment that speeds up installation and ensures maximum precision in movement.

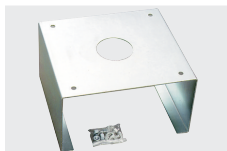


Backup battery power supply system, installable on-board unit.

Technical features

	GIOTTO 30 BT	GIOTTO 30S BT	GIOTTO 60 BT	GIOTTO 60S BT
Useful passage	3 m	3 m	6 m	6 m
Control unit	LIBRA C G	LIBRA C GS	LIBRA C G	LIBRA C GS
Motor power supply	24 V	24 V	24 V	24 V
Opening or closing time	4 sec	2.5 sec	5 sec	4 sec
Type of limit switch	electronic open/close	electronic open/close	electronic open/close	electronic open/close
Slowdown	adjustable	adjustable	adjustable	adjustable
Locking	mechanical	mechanical	mechanical	mechanical
Release	personal release key	personal release key	personal release key	personal release key
Frequency of use	intensive	very intensive	intensive	very intensive
Environmental conditions	from -10/(-40 with acc. thermo) °C to 55 °C			
Protection rating	IP54			

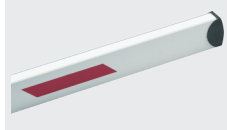
ACCESSORIES



CBO - D730251
Anchor base for MOOVI and GIOTTO series barriers



AQ3 - N728033
Complete 3 metre rectangular boom for GIOTTO and MOOVI



AQ5 - N728034
Complete 5 metre rectangular boom for GIOTTO and MOOVI



OMEGA AQ - N999507
Pack of accessories for installation of 3/5 m rectangular boom for MOOVI/GIOTTO



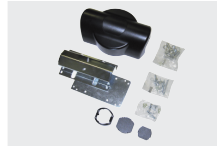
AT3 - N728031
Complete 3 metre round boom for MOOVI/GIOTTO



AT5 - N728032
Complete 5 metre round boom for MOOVI/GIOTTO



AT6 - N728038
Complete 6 metre round boom for MOOVI/GIOTTO



OMEGA AT - N999513
Pack of accessories for installation of 3/6 m round boom for MOOVI/GIOTTO



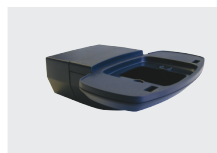
FAF 2 - P120023
Rest fork for booms. For bolting to ground.



FAF 2 RAL - P120023 00100
Fixed rest fork for booms with customised RAL colour. For bolting to ground.



RADIUS B LTA 24 R1 - D113748 00003
Flashing beacon with built-in antenna for 24V motors. Flashing light without incorporated antenna for motors with power supply 24 V.



B 00 R02 - P123025
Wall mounting for B LTA series flashing beacons

ACCESSORIES



MOOVI 130 KIT - P120002
Support for fitting CELLULA 130 on MOOVI/GIOTTO enclosure in line with boom



Mitto B Rcb02 R1 - D111904
Transmitter with 2 channels. Range 50/100 m. Power supply 12 V with 1 battery type 23 A



CMS - D831081
Sign



ACTR - N999608
Pack of 12 additional reflective labels (1 pack already included with each boom)



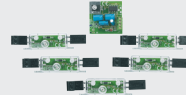
ART 90 Q - N728051
90° articulated joint for Moovi and Giotto booms. Max 4m clear passage.



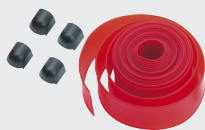
SB - D573003
Aluminium skirt for road barrier booms. Price per linear metre (Calculate length of useful passage minus 40cm)



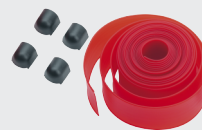
KIT LIGHT - P120001 00001
Lights on boom 3 or 4.5 m



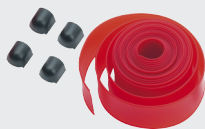
KIT LIGHT1 - P120001 00002
Lights for booms over 4.5 m



PCA N3 - P120028 00001
Top and bottom rubber cover profile for booms of 3 m max.



PCA N4 - P120028 00002
Top and bottom rubber cover profile for booms of 4 m max.



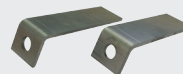
PCA N5 - P120028 00003
Top and bottom rubber cover profile for booms of 5 m max.



PCA N6 - P120028 00004
Top and bottom rubber cover profile for booms of 6 m max.



FAF 2R RAL - P120025 00100
Fixed rest fork for booms with customised RAL colour. For bolting to ground.



ZF AF2 - P120026
Additional anchor plates for cementing FAF2 forks to ground.



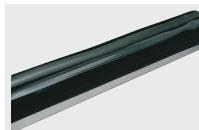
GAM - D940007
Mobile rest leg for BGV barrier boom (not usable on BGV 30)



GA AQ AT - D940008
Movable support leg for AQ or AT booms (on MOOVI, MICHELANGELO and GIOTTO barriers)

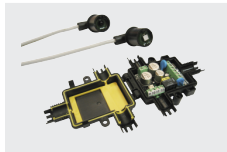


GAMA AQ AT - D940009
Dampened movable support leg for AQ or AT booms (on MOOVI, MICHELANGELO and GIOTTO barriers)



BIR C - N190104
Rubber safety edge (H 30 mm), price per m

ACCESSORIES



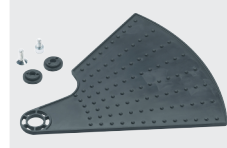
VENTIMIGLIA NS - P111401 00001
Infrared device for BIR C or BAR C safety edges (conforms to EN 12978 Standard)



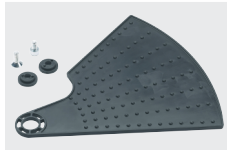
BAT KIT 1 - P120017
Set of buffer batteries for GIOTTO series barriers



THERMO - P120018
Thermostat-controlled heating element allowing the use of GIOTTO, MOOVI, MOOVI BT, MICHELANGELO barriers in ambient temperatures as low as -40°C



PRM - P120031
Hand protection kit against cutting, for MOOVI



MOOVI PRM KIT - P120004
Hand protection kit against cutting, for MOOVI



SCS 1 - P111376
Serial board for connection to zone and opposing leaves for control units with display While stocks last



RME 2 - P111001 00003
230Vac dual channel metal object detector with installation base



RME 1 BT - P111274
24Vac single channel metal object detector with installation base



SPIRA 2X1 - D110926 00001
Magnetic loop 2 x 1 m



ERIS A30 - P111537
Pair of wireless photocells with the possibility of managing an active infrared or resistive sensitive edge. Pair of wireless photocells with possibility of management of an IR or resistive active safety edge. Possibility of directing the beam 180° horizontally and 20° vertically. Range 30 m. Power supply 24 V ac/dc.



DESME A15 - P111526
Pair of self-aligning photocells. Range 30 m. Power supply 24 V ac/dc. Pair of self-aligning photocells. Range 30 m. Power supply 24 V ac/dc.



DESME A15 O - P111527
Pair of self-aligning photocells. Range 30 m. Power supply 24 V ac/dc.



THEA A15 O.PF - P111528
For external application. Range 30 m. Power supply 24 V ac/dc. Synchronised infrared signal to avoid any possibility of accidental dazzling. Beam can be oriented 40° horizontally and 10° vertically. Pair of orientable photocells with integrated flashing beacon



PHP - P903018
Pair of aluminium posts for THEA/DESME series photocells Height 522 mm



PHP2 - P903019
Pair of double aluminium posts for THEA/DESME series photocells. Height 522 mm



PHP ADA - P903025
Pair of adapters for the installation of AKTA photocells on PHP posts

ACCESSORIES



GSM RECEIVER - D113746 00003
GSM receiver. Enables the operation of an automation system with a free phone call



Q.BO KEY WM AV - P121023
Vandalproof key selector with metal structure. Vandalproof key selector with double contact, for outdoor use. Metal structure.



Q.BO TOUCH - P121024
Wireless digital touch button panel 433Mhz rolling code.



CLONIX 2E - D113674 00001
External dual channel 433 MHz rolling code receiver. 128-position memory



CLONIX 4 RTE - D113718 00002
External 4-channel 433 MHz rolling code receiver. Power relay outputs (16A 230v)



CLONIX 2E AC U-LINK 230 - D113807 00002
433Mhz external receiver with 2 outputs with NO contact. Compatible with U-LINK protocol (with 3 connection slots). Power supply 230V, 2048-position memory



CLONIX UNI AC U-LINK 230V - D113808 00003
433Mhz external receiver with 3 outputs: 2 with NO contact and one NO/NC configurable. Compatible with U-LINK protocol (with 3 connection slots). Power supply 230V, 2048-position memory



ECOSOL PANEL - N999471
Solar panel maximum power 35 Wp for recharging the ECOSOL system Solar-powered system compatible with BFT systems only



ECOSOL DOUBLE - D113732
Expansion batteries



ECOSOL CABLE - N999476
20 m extension for ECOSOL CHARGER



ECOSOL BOX - D113731
Control and management unit for supplying solar power to systems with supply voltage of 24 V. Batteries not included.



ECOSOL POST BR - N999473
Set of stainless steel screws and brackets for installing the ECOSOL PANEL on a post of diameter 48-100mm



ECOSOL SECURITY - N999475
Anti-tamper stainless steel screws and fasteners for ECOSOL PANEL and ECOSOL POST BR



ECOSOL CHARGER - N999477
Battery chargers for ECOSOL BOX and ECOSOL DOUBLE